

City of South Lake Tahoe Transient Occupancy Tax Report

Revenue Collected in July 2019 for the Month of June 2019

Monthly Activity:	Collected in This Month 2019	Collected in This Month 2018	Month Variance	% Change
Motels	\$307,148.25	\$333,027.58	(\$25,879.33)	-7.77%
Delinquent Motel Payments	\$3,421.04	\$1,816.07	\$1,604.97	88.38%
Property Management VHR	\$203,663.81	\$225,742.10	(\$22,078.29)	-9.78%
Individual Property Owners (VHR)	\$172,268.65	\$170,668.67	\$1,599.98	0.94%
Shared VHRs	\$7,193.96	\$3,171.82	\$4,022.14	100.00%
Campground	\$8,843.03	\$9,340.79	(\$497.76)	-5.33%
Promotion 2%	\$234,179.58	\$247,922.35	(\$13,742.77)	-5.54%
TOT Totals	\$936,718.32	\$991,689.38	(\$54,971.06)	-5.54%
Total General Fund TOT	\$936,718.32	\$991,689.38	(\$54,971.06)	-5.54%
City Redevelopment TOT	\$234,179.58	\$247,922.35	(\$13,742.77)	-5.54%
Redevelopment Area TOT	\$585,410.51	\$608,487.33	(\$23,076.82)	-3.79%
Total General Fund Monthly Collections	\$1,756,308.41	\$1,848,099.06	(\$91,790.65)	-4.97%
Restricted Measure P TOT 2%	\$334,697.39	\$353,879.56	(\$19,182.17)	-5.42%

Fiscal Year-to-Date:	2018/19	2017/18	Fiscal Year Variance	% Change
Motels	\$1,913,974.73	\$1,707,003.94	\$206,970.79	12.12%
Delinquent Motel Payments	\$33,786.01	\$23,310.14	\$10,475.87	44.94%
Property Management VHR	\$1,424,304.52	\$1,373,115.60	\$51,188.92	3.73%
Individual Property Owners	\$716,861.44	\$687,795.98	\$29,065.46	4.23%
Shared VHRs	\$22,462.57	\$8,851.93	\$13,610.64	153.76%
Campground	\$29,898.25	\$33,677.34	(\$3,779.09)	-11.22%
Promotion 2%	\$1,380,954.55	\$1,277,918.34	\$103,036.21	8.06%
TOT Totals	\$5,522,242.07	\$5,111,673.27	\$410,568.80	8.03%
Total General Fund TOT	\$5,522,242.07	\$5,111,673.27	\$410,568.80	8.03%
City Redevelopment TOT	\$1,380,954.55	\$1,277,918.34	\$103,036.21	8.06%
Redevelopment Area TOT	\$4,519,549.64	\$4,246,222.75	\$273,326.89	6.44%
Total to Date General Fund Collections	\$11,422,746.26	\$10,635,814.36	\$786,931.90	7.40%
Motel and VHR TOT Audit Collections	\$118,594.01			
Total TOT Collections	\$11,541,340.27			
Restricted Measure P TOT 2%	\$2,159,795.72	\$2,009,022.65	\$150,773.07	7.50%

TOT is collected and recorded as revenue in the General Ledger in the month following the actual motel stay.

Motel and VHR TOT Audit Collections are actual amounts collected. Does not include balances owed but not yet paid.

Restricted Measure P TOT 2% was implemented 1/1/2017.

City of South Lake Tahoe

Room Rentals By Zone Month of June 2019

		<i>Receipts</i>	<i>Taxable Rents</i>	<i>Total Room Nights Available</i>	<i>Room Nights Rented</i>	<i>Occupancy Percentage</i>	<i>Average Room Price</i>
		Gross Rentals Reported	Net Rentals Reported				
Zone 1	2019	\$7,341,855	\$7,167,449	105150	44985	43%	\$163
	2018	\$7,503,776	\$7,391,118	103290	46568	45%	\$161
	Variance	(\$161,921)	(\$223,669)	1860	(1583)	-2%	\$2
Zone 2	2019	\$1,535,750	\$1,397,490	34200	11313	33%	\$136
	2018	\$1,583,393	\$1,513,418	33840	12063	36%	\$131
	Variance	(\$47,643)	(\$115,928)	360	(750)	-3%	\$5
Zone 3	2019	\$1,121,283	\$1,092,898	15960	6682	42%	\$168
	2018	\$1,227,077	\$1,200,267	15960	6486	41%	\$189
	Variance	(\$105,794)	(\$107,369)	0	196	1%	(\$21)
Zone 4	2019	\$301,856	\$202,547	11610	3001	26%	\$101
	2018	\$307,027	\$216,981	12210	3084	25%	\$100
	Variance	(\$5,171)	(\$14,434)	(600)	(83)	1%	\$1
Zone 5	2019	\$166,676	\$117,964	7260	1065	15%	\$157
	2018	\$194,376	\$155,421	6540	1189	18%	\$163
	Variance	(\$27,700)	(\$37,457)	720	(124)	-3%	(\$6)
Total All Zones	2019	\$10,467,420	\$9,978,348	174180	67046	38%	\$156
	2018	\$10,815,649	\$10,477,205	171840	69390	40%	\$156
	Variance	(\$348,229)	(\$498,857)	2340	(2344)	-2%	\$0

Zone Descriptions:

- Zone 1 Stateline Area
- Zone 2 Ski Run, Heavenly and Bijou Areas
- Zone 3 Al Tahoe Area
- Zone 4 Sierra Tract, East Y Area
- Zone 5 West Y and Emerald Bay Road Areas

Vacation Home Rentals - Managed by Rental Agents

	<i>Taxable Rents</i>	<i>Total Units Available</i>	<i>Total Units Rented</i>	<i>Occupancy Percentage</i>	<i>Average Room Price</i>
	Net Rentals Reported				
2019	\$3,589,904	26460	10314	39%	\$348.06
2018	\$3,980,471	28500	10894	38%	\$365.38
Variance	(\$390,567)	(2040)	(580)	1%	(\$17.32)

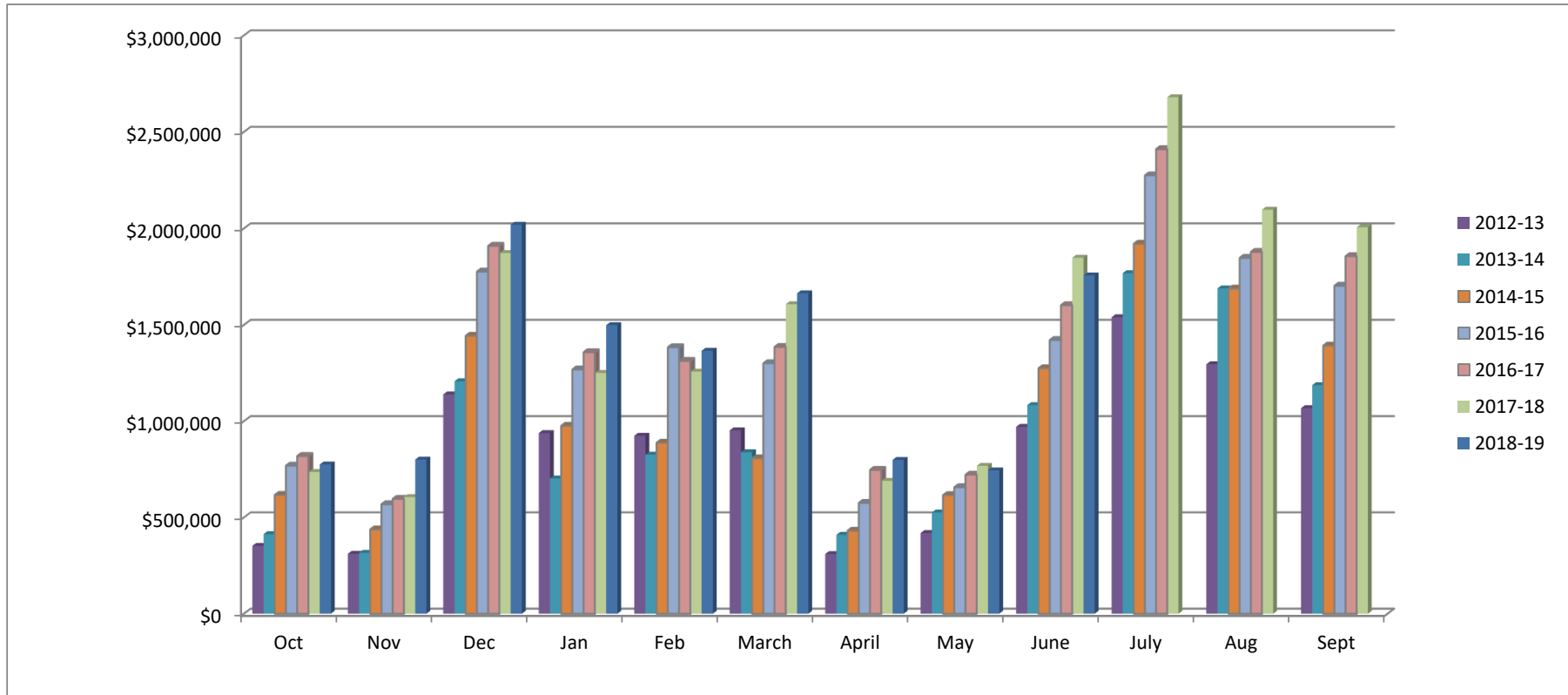
City of South Lake Tahoe

Room Rentals By Unit Size Month of June 2019

		<i>Receipts</i> Gross Rentals Reported	<i>Taxable rents</i> Net Rentals Reported	Total Rooms Nights Available	Room Nights Rented	Occupancy Percentage	Average Room Price
Units 1-15	2019	\$451,671	\$327,983	9480	2542	27%	\$178
	2018	\$523,265	\$411,588	9840	2620	27%	\$200
	Variance	(\$71,594)	(\$83,605)	(360)	(78)	0%	(\$22)
Units 16-30	2019	\$821,690	\$546,071	26340	4610	18%	\$178
	2018	\$670,284	\$502,568	24780	4428	18%	\$151
	Variance	\$151,406	\$43,503	1560	182	0%	\$27
Units 31-50	2019	\$689,913	\$660,998	16680	5045	30%	\$137
	2018	\$691,234	\$681,359	15480	5479	35%	\$126
	Variance	(\$1,321)	(\$20,361)	1200	(434)	-5%	\$11
Units 51-75	2019	\$1,373,421	\$1,368,051	25560	11540	45%	\$119
	2018	\$1,522,612	\$1,522,612	25560	13007	51%	\$117
	Variance	(\$149,191)	(\$154,561)	0	(1467)	-6%	\$2
Units 76-125	2019	\$2,274,405	\$2,231,505	24210	12700	52%	\$179
	2018	\$2,263,814	\$2,228,114	24270	13513	56%	\$168
	Variance	\$10,591	\$3,391	(60)	(813)	-4%	\$11
Units 126+	2019	\$4,856,321	\$4,843,741	71910	30609	43%	\$159
	2018	\$5,144,439	\$5,130,964	71910	30343	42%	\$170
	Variance	(\$288,118)	(\$287,223)	0	266	1%	(\$11)
Total All Unit Sizes	2019	\$10,467,420	\$9,978,348	174180	67046	38%	\$156
	2018	\$10,815,649	\$10,477,205	171840	69390	40%	\$156
	Variance	(\$348,229)	(\$498,857)	2340	(2344)	-2%	\$0

City of South Lake Tahoe
TOT Collected
(Excluding audit collections and 2% Measure P TOT)

	<i>Oct</i>	<i>Nov</i>	<i>Dec</i>	<i>Jan</i>	<i>Feb</i>	<i>March</i>	<i>April</i>	<i>May</i>	<i>June</i>	<i>July</i>	<i>Aug</i>	<i>Sept</i>	<i>Year to Date Total</i>
2012-13	\$352,360	\$311,214	\$1,139,117	\$938,361	\$924,117	\$952,435	\$309,956	\$419,142	\$970,739	\$1,539,841	\$1,295,749	\$1,067,658	\$10,220,690
2013-14	\$413,240	\$316,321	\$1,207,678	\$702,471	\$826,225	\$838,573	\$409,738	\$525,592	\$1,083,420	\$1,768,106	\$1,689,276	\$1,187,000	\$10,967,640
2014-15	\$616,901	\$438,053	\$1,443,697	\$975,930	\$888,351	\$807,169	\$431,120	\$615,934	\$1,275,041	\$1,920,591	\$1,688,228	\$1,392,562	\$12,493,577
2015-16	\$768,980	\$568,608	\$1,776,411	\$1,268,767	\$1,384,083	\$1,300,922	\$575,701	\$656,965	\$1,421,739	\$2,274,978	\$1,847,480	\$1,702,865	\$15,547,498
2016-17	\$819,179	\$596,552	\$1,909,793	\$1,358,224	\$1,313,140	\$1,385,566	\$747,178	\$722,225	\$1,602,262	\$2,410,778	\$1,878,524	\$1,856,492	\$16,599,915
2017-18	\$736,201	\$605,917	\$1,872,165	\$1,250,476	\$1,257,575	\$1,607,302	\$690,142	\$767,936	\$1,848,099	\$2,679,628	\$2,096,826	\$2,006,207	\$17,418,476
2018-19	\$775,191	\$800,725	\$2,018,756	\$1,498,862	\$1,365,859	\$1,663,775	\$798,914	\$744,356	\$1,756,308				\$11,422,746



City of South Lake Tahoe Rooms Rented

	<i>Oct</i>	<i>Nov</i>	<i>Dec</i>	<i>Jan</i>	<i>Feb</i>	<i>March</i>	<i>April</i>	<i>May</i>	<i>June</i>	<i>July</i>	<i>Aug</i>	<i>Sept</i>	<i>Year to Date Total</i>
2012-13	30,183	23,447	46,442	46,215	39,121	40,558	25,427	33,031	50,836	70,868	63,567	49,721	519,416
2013-14	33,894	22,228	41,156	32,355	40,951	40,994	31,015	37,413	54,548	76,667	69,787	49,168	530,176
2014-15	43,162	28,676	48,200	45,142	38,962	36,820	31,934	42,741	59,041	75,745	70,026	59,448	579,897
2015-16	51,945	36,173	56,669	57,800	56,716	51,247	37,868	41,535	63,855	84,039	76,476	65,463	679,786
2016-17	52,485	35,490	55,715	57,917	51,771	55,719	47,012	43,964	66,485	87,416	74,401	67,608	695,983
2017-18	50,057	35,157	49,640	50,056	51,774	61,383	41,315	45,832	69,390	89,070	78,397	71,955	694,026
2018-19	51,115	43,850	57,807	60,319	51,675	57,424	47,020	41,658	67,046				477,914

