

City of South Lake Tahoe Transient Occupancy Tax Report

Revenue Collected in May 2020 for the Month of April 2020

Monthly Activity:	Collected in This Month 2020	Collected in This Month 2019	Month Variance	% Change
Motels	\$10,245	\$153,318	(\$143,073)	-93.3%
Delinquent Motel Payments	\$2,388	\$4,159	(\$1,772)	-42.6%
Property Management VHR	\$1,432	\$74,463	(\$73,031)	-98.1%
Individual Property Owners (VHR)	\$11,636	\$7,059	\$4,577	64.8%
Shared VHRs	\$768	\$291	\$477	163.9%
Campground	\$0	\$3,321	(\$3,321)	-100.0%
Promotion 2%	\$8,823	\$80,871	(\$72,048)	-89.1%
TOT Totals	\$35,292	\$323,483	(\$288,191)	-89.1%
Total General Fund TOT	\$35,292	\$323,483	(\$288,191)	-89.1%
City Redevelopment TOT	\$8,823	\$80,871	(\$72,048)	-89.1%
Redevelopment Area TOT	\$5,255	\$394,559	(\$389,304)	-98.7%
Total General Fund Monthly Collections	\$49,370	\$798,914	(\$749,543)	-93.8%
Restricted Measure P TOT 2%	\$9,844	\$147,088	(\$137,244)	-93.3%

Fiscal Year-to-Date:	2019/2020	2018/2019	Fiscal Year Variance	% Change
Motels	\$1,115,588	\$1,453,883	(\$338,295)	-23.3%
Delinquent Motel Payments	\$23,442	\$29,472	(\$6,030)	-20.5%
Property Management VHR	\$948,946	\$1,139,177	(\$190,231)	-16.7%
Individual Property Owners	\$431,911	\$534,140	(\$102,228)	-19.1%
Shared VHRs	\$41,475	\$14,596	\$26,878	184.1%
Campground	\$13,090	\$17,257	(\$4,167)	-24.1%
Promotion 2%	\$858,151	\$1,063,367	(\$205,216)	-19.3%
TOT Totals	\$3,432,603	\$4,251,891	(\$819,288)	-19.3%
Total General Fund TOT	\$3,432,603	\$4,251,891	(\$819,288)	-19.3%
City Redevelopment TOT	\$858,151	\$1,063,367	(\$205,216)	-19.3%
Redevelopment Area TOT	\$2,905,357	\$3,606,824	(\$701,466)	-19.4%
Total to Date General Fund Collections	\$7,196,112	\$8,922,082	(\$1,725,970)	-19.3%
Motel and VHR TOT Audit Collections	\$68,095			
Total TOT Collections	\$7,264,207			
Restricted Measure P TOT 2%	\$1,361,302	\$1,685,293	(\$323,991)	-19.2%

TOT is collected and recorded as revenue in the General Ledger in the month following the actual motel stay.

Motel and VHR TOT Audit Collections are actual amounts collected. Does not include balances owed but not yet paid.

Restricted Measure P TOT 2% was implemented 1/1/2017.

City of South Lake Tahoe

Room Rentals By Zone Month of April 2020

		<i>Receipts</i>	<i>Taxable Rents</i>	Total Room Nights Available	Room Nights Rented	Occupancy Percentage	Average Room Price
		Gross Rentals Reported	Net Rentals Reported				
Zone 1	2020	\$188,574	\$69,628	103620	1104	1%	\$171
	2019	\$4,569,207	\$4,440,914	104490	33743	32%	\$135
	Variance	(\$4,380,633)	(\$4,371,286)	(870)	(32639)	-31%	\$34
Zone 2	2020	\$136,859	\$40,756	36000	557	2%	\$246
	2019	\$741,314	\$649,875	34200	7375	22%	\$101
	Variance	(\$604,455)	(\$609,119)	1800	(6818)	-20%	\$145
Zone 3	2020	\$25,684	\$0	15960	0	0%	\$0
	2019	\$407,443	\$381,258	15960	3551	22%	\$115
	Variance	(\$381,759)	(\$381,258)	0	(3551)	-22%	(\$115)
Zone 4	2020	\$95,785	\$1,115	12450	13	0%	\$7,368
	2019	\$190,707	\$87,775	11610	1781	15%	\$107
	Variance	(\$94,922)	(\$86,660)	840	(1768)	-15%	\$7,261
Zone 5	2020	\$32,435	\$4,187	8310	64	1%	\$507
	2019	\$87,421	\$57,339	6090	570	9%	\$153
	Variance	(\$54,986)	(\$53,152)	2220	(506)	-9%	\$353
Total All Zones	2020	\$479,336	\$115,685	176340	1738	1%	\$276
	2019	\$5,996,092	\$5,617,161	172350	47020	27%	\$128
	Variance	(\$5,516,756)	(\$5,501,476)	3990	(45282)	-26%	\$148

Zone Descriptions:

- Zone 1 Stateline Area
- Zone 2 Ski Run, Heavenly and Bijou Areas
- Zone 3 Al Tahoe Area
- Zone 4 Sierra Tract, East Y Area
- Zone 5 West Y and Emerald Bay Road Areas

Vacation Home Rentals - Managed by Rental Agents

	<i>Taxable Rents</i>	Total Units Available	Total Units Rented	Occupancy Percentage	Average Room Price
	Net Rentals Reported				
2020	\$11,072	25620	61	0%	\$182
2019	\$1,392,876	26730	4945	18%	\$282
Variance	(\$1,381,804)	(1110)	(4884)	-18%	(\$101)

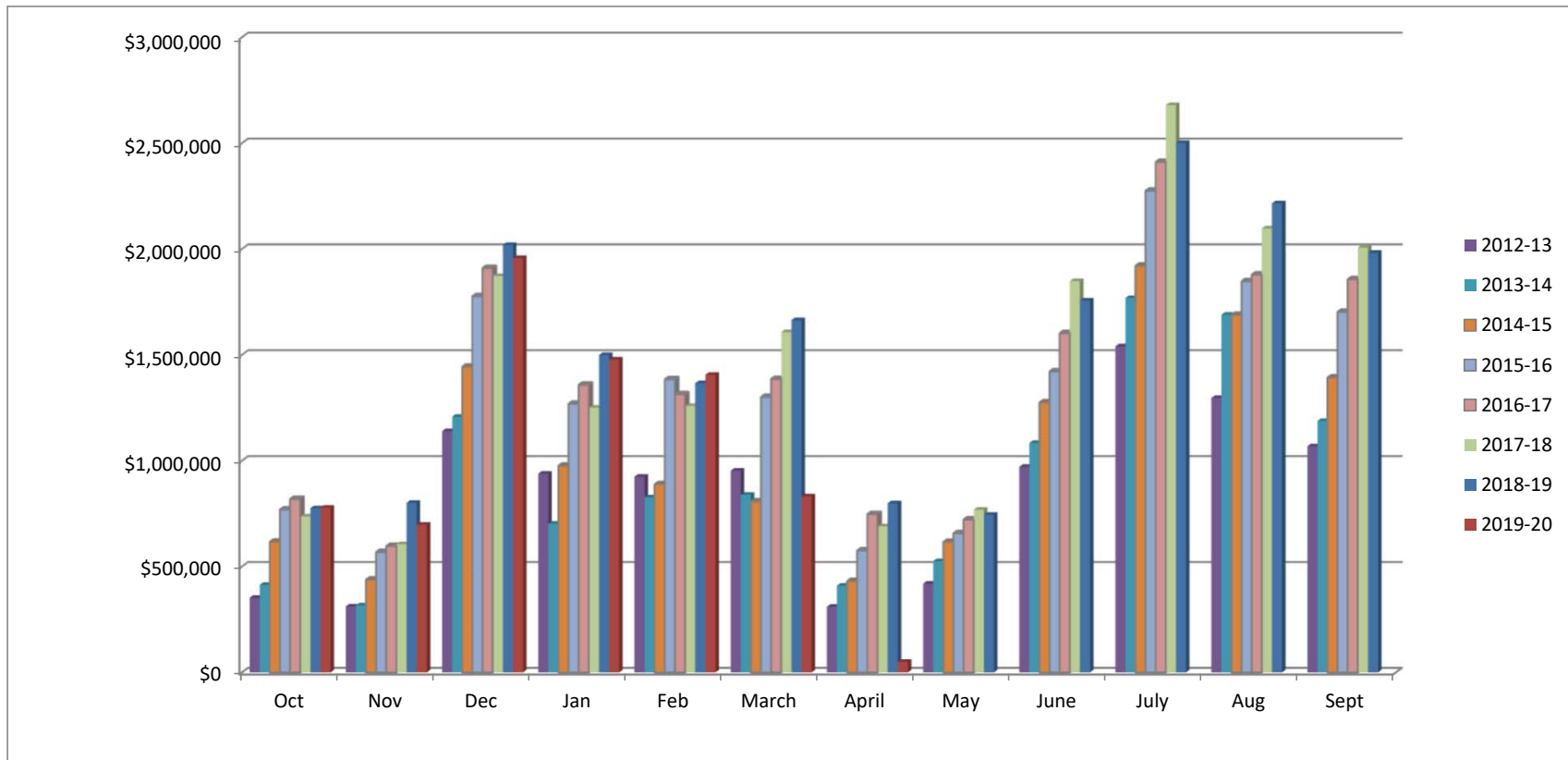
City of South Lake Tahoe

Room Rentals By Unit Size Month of April 2020

		<i>Receipts</i>	<i>Taxable rents</i>	Total Rooms	Room Nights	Occupancy	Average
		Gross Rentals	Net Rentals				
		Reported	Reported				
Units 1-15	2020	\$107,836	\$7,628	10170	129	1%	\$836
	2019	\$257,740	\$147,439	9030	1690	19%	\$153
	Variance	(\$149,904)	(\$139,811)	1140	(1561)	-17%	\$683
Units 16-30	2020	\$200,199	\$4,926	27660	47	0%	\$4,260
	2019	\$463,291	\$240,916	24900	2770	11%	\$167
	Variance	(\$263,092)	(\$235,990)	2760	(2723)	-11%	\$4,092
Units 31-50	2020	\$35,517	\$8,997	16680	173	1%	\$205
	2019	\$306,714	\$288,239	16680	3155	19%	\$97
	Variance	(\$271,197)	(\$279,242)	0	(2982)	-18%	\$108
Units 51-75	2020	\$12,492	\$12,492	25710	201	1%	\$62
	2019	\$652,213	\$652,213	25560	8093	32%	\$81
	Variance	(\$639,721)	(\$639,721)	150	(7892)	-31%	(\$18)
Units 76-125	2020	\$68,206	\$26,556	24210	310	1%	\$220
	2019	\$1,033,512	\$1,010,312	24270	8200	34%	\$126
	Variance	(\$965,306)	(\$983,756)	(60)	(7890)	-33%	\$94
Units 126+	2020	\$55,086	\$55,086	71910	878	1%	\$63
	2019	\$3,282,622	\$3,278,042	71910	23112	32%	\$142
	Variance	(\$3,227,536)	(\$3,222,956)	0	(22234)	-31%	(\$79)
Total All Unit Sizes	2020	\$479,336	\$115,685	176340	1738	1%	\$276
	2019	\$5,996,092	\$5,617,161	172350	47020	27%	\$128
	Variance	(\$5,516,756)	(\$5,501,476)	3990	(45282)	-26%	\$148

**City of South Lake Tahoe
TOT Collected
(Excluding audit collections and 2% Measure P TOT)**

	<i>Oct</i>	<i>Nov</i>	<i>Dec</i>	<i>Jan</i>	<i>Feb</i>	<i>March</i>	<i>April</i>	<i>May</i>	<i>June</i>	<i>July</i>	<i>Aug</i>	<i>Sept</i>	<i>Year to Date Total</i>
2012-13	\$352,360	\$311,214	\$1,139,117	\$938,361	\$924,117	\$952,435	\$309,956	\$419,142	\$970,739	\$1,539,841	\$1,295,749	\$1,067,658	\$10,220,690
2013-14	\$413,240	\$316,321	\$1,207,678	\$702,471	\$826,225	\$838,573	\$409,738	\$525,592	\$1,083,420	\$1,768,106	\$1,689,276	\$1,187,000	\$10,967,640
2014-15	\$616,901	\$438,053	\$1,443,697	\$975,930	\$888,351	\$807,169	\$431,120	\$615,934	\$1,275,041	\$1,920,591	\$1,688,228	\$1,392,562	\$12,493,577
2015-16	\$768,980	\$568,608	\$1,776,411	\$1,268,767	\$1,384,083	\$1,300,922	\$575,701	\$656,965	\$1,421,739	\$2,274,978	\$1,847,480	\$1,702,865	\$15,547,498
2016-17	\$819,179	\$596,552	\$1,909,793	\$1,358,224	\$1,313,140	\$1,385,566	\$747,178	\$722,225	\$1,602,262	\$2,410,778	\$1,878,524	\$1,856,492	\$16,599,915
2017-18	\$736,201	\$605,917	\$1,872,165	\$1,250,476	\$1,257,575	\$1,607,302	\$690,142	\$767,936	\$1,848,099	\$2,679,628	\$2,096,826	\$2,006,207	\$17,418,476
2018-19	\$775,191	\$800,725	\$2,018,756	\$1,498,862	\$1,365,859	\$1,663,775	\$798,914	\$744,356	\$1,756,308	\$2,500,581	\$2,215,538	\$1,982,001	\$18,120,867
2019-20	\$777,723	\$697,767	\$1,957,152	\$1,477,661	\$1,405,341	\$831,099	\$49,370						\$7,196,112



City of South Lake Tahoe Rooms Rented

	<i>Oct</i>	<i>Nov</i>	<i>Dec</i>	<i>Jan</i>	<i>Feb</i>	<i>March</i>	<i>April</i>	<i>May</i>	<i>June</i>	<i>July</i>	<i>Aug</i>	<i>Sept</i>	<i>Year to Date Total</i>
2012-13	30,183	23,447	46,442	46,215	39,121	40,558	25,427	33,031	50,836	70,868	63,567	49,721	519,416
2013-14	33,894	22,228	41,156	32,355	40,951	40,994	31,015	37,413	54,548	76,667	69,787	49,168	530,176
2014-15	43,162	28,676	48,200	45,142	38,962	36,820	31,934	42,741	59,041	75,745	70,026	59,448	579,897
2015-16	51,945	36,173	56,669	57,800	56,716	51,247	37,868	41,535	63,855	84,039	76,476	65,463	679,786
2016-17	52,485	35,490	55,715	57,917	51,771	55,719	47,012	43,964	66,485	87,416	74,401	67,608	695,983
2017-18	50,057	35,157	49,640	50,056	51,774	61,383	41,315	45,832	69,390	89,070	78,397	71,955	694,026
2018-19	51,115	43,850	57,807	60,319	51,675	57,424	47,020	41,658	67,046	85,023	82,754	69,244	714,935
2019-20	50,619	36,938	52,338	57,754	53,535	25,684	1,738						278,606

