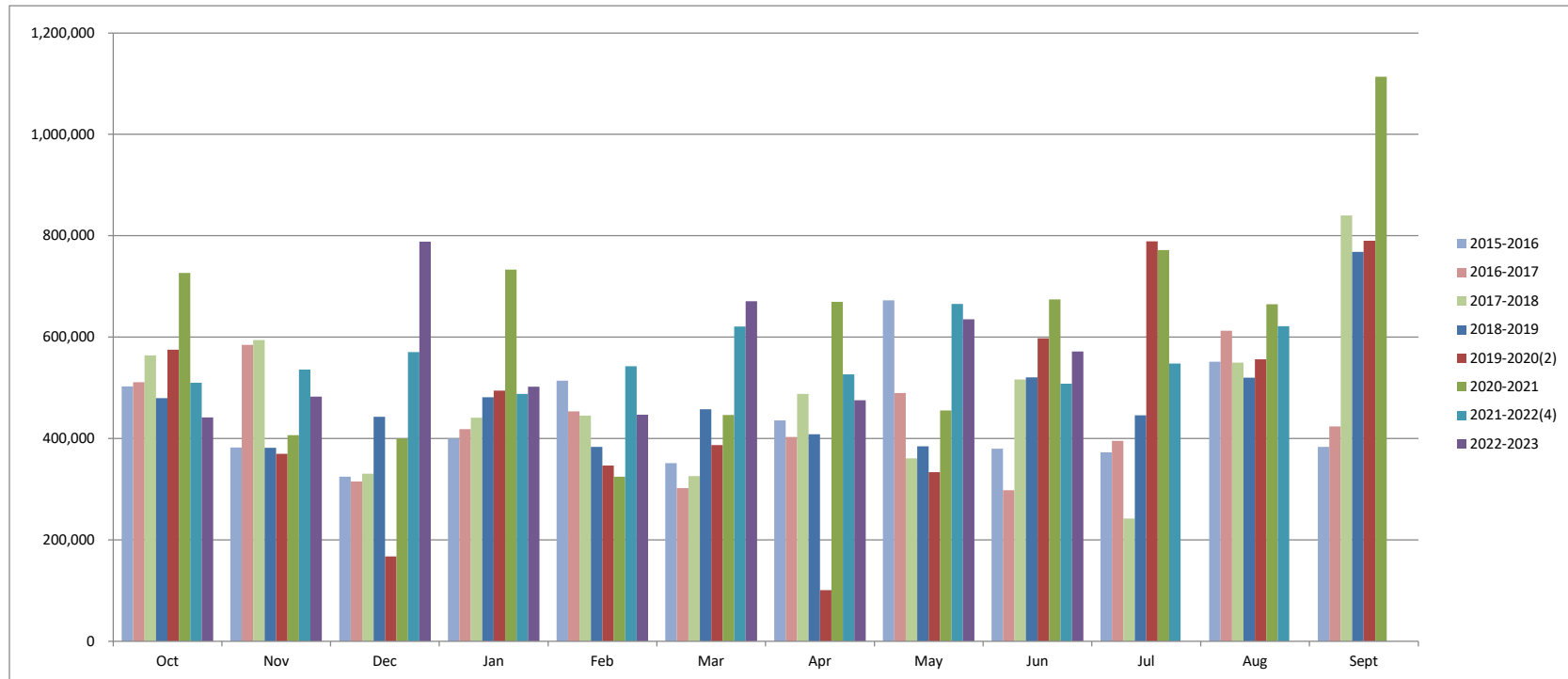


City of South Lake Tahoe Sales Tax ⁽¹⁾

	<u>Oct</u>	<u>Nov</u>	<u>Dec</u>	<u>Jan</u>	<u>Feb</u>	<u>Mar</u>	<u>Apr</u>	<u>May</u>	<u>Jun</u>	<u>Jul</u>	<u>Aug</u>	<u>Sept</u>	<u>Total</u>
2015-2016	502,445	382,263	324,266	399,844	513,697	351,396	435,296	672,584	379,996	372,718	551,567	383,400	5,269,471
2016-2017	511,200	584,486	315,200	418,341	453,338	302,100	402,794	489,419	298,000	395,409	612,247	423,400	5,205,933
2017-2018	563,521	593,773	330,600	440,700	445,022	325,600	487,962	360,960	516,133	241,945	549,590	839,988	5,695,794
2018-2019	479,635	381,404	442,455	481,130	383,003	457,617	408,387	384,275	520,279	445,645	519,885	767,735	5,671,450
2019-2020 ⁽²⁾	575,116	369,851	166,855	494,428	346,261	386,933	100,934	333,448	597,370	788,872	556,165	789,933	5,506,167
2020-2021 ⁽³⁾	726,741	406,633	400,104	732,730	324,295	446,076	669,754	454,942	674,492	771,774	665,007	1,113,620	7,386,169
2021-2022 ⁽⁴⁾	509,898	535,719	570,445	487,873	542,633	620,672	526,326	665,192	508,055	547,840	621,201	1,132,840	7,268,695
2022-2023	441,590	482,505	788,197	501,738	446,558	670,939	475,293	635,074	571,377				5,013,272



⁽¹⁾ This graph was revised in February 2017 to include triple flip reimbursements received twice annually through approximately mid 2015/16. For comparison purposes, each fiscal year's total triple flip amount was equally allocated between the months for that year. You can find a complete explanation of the sales and use tax triple flip and the unwind process here <http://californiacityfinance.com/TripleFlipUnwind150225.pdf>.

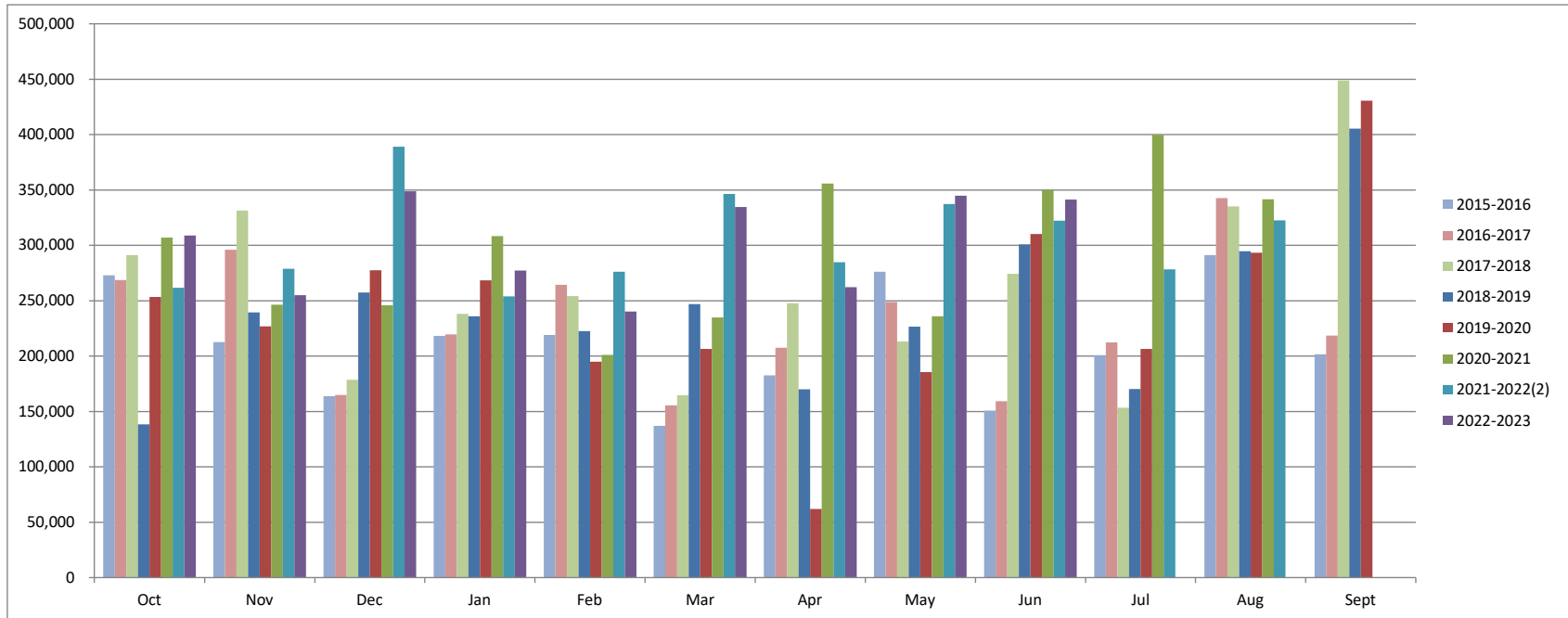
⁽²⁾ Out of \$789K Sales Tax recorded for July 2020, approximately \$300K is attributable to the correction of December 2019 Sales Tax distribution from CDTFA.

⁽³⁾ 2020-2021 Reflects 13 months of sales tax revenue due to change in accounting accrual methodology.

⁽⁴⁾ Starting in 2021-2022, September sales tax revenue received in November is recorded into the previous fiscal year. Sales tax is two months in arrears. The amounts are reported in the month the revenue is earned.

City of South Lake Tahoe Measure Q Tax

	<u>Oct</u>	<u>Nov</u>	<u>Dec</u>	<u>Jan</u>	<u>Feb</u>	<u>Mar</u>	<u>Apr</u>	<u>May</u>	<u>Jun</u>	<u>Jul</u>	<u>Aug</u>	<u>Sept</u>	<u>Total</u>
2015-2016	273,000	212,697	163,700	218,200	218,944	137,000	182,700	276,155	150,600	200,800	291,057	201,600	2,526,453
2016-2017	268,800	296,029	164,800	219,700	264,433	155,600	207,400	248,847	159,300	212,400	342,631	218,400	2,758,339
2017-2018	291,200	331,473	178,600	238,200	254,094	164,700	247,674	213,112	274,416	153,419	335,140	448,849	3,130,878
2018-2019	138,220	239,371	257,414	235,826	222,456	246,862	170,093	226,488	300,790	170,348	294,683	405,478	2,908,030
2019-2020	253,495	226,829	277,403	268,364	194,856	206,395	61,974	185,455	310,308	206,463	293,203	430,621	2,915,365
2020-2021 ⁽¹⁾	307,134	246,391	246,002	308,306	201,079	234,982	355,917	235,968	350,095	399,915	341,630	603,037	3,830,456
2021-2022 ⁽²⁾	261,694	278,949	389,184	253,977	276,283	346,397	284,764	337,376	322,346	278,256	322,689	581,487	3,933,402
2022-2023	308,809	254,901	348,853	277,157	240,121	334,745	262,102	344,696	341,415				2,712,799



⁽¹⁾ 2020-2021 Reflects 13 months of Measure Q tax revenue due to change in accounting accrual methodology.

⁽²⁾ Starting in 2021-2022, September Measure Q tax revenue received in November is recorded into the previous fiscal year. Measure Q tax is two months in arrears. The amounts are reported in the month the revenue is earned.