

Take Action!

The City of South Lake Tahoe can use your help in locating potential threats to our stormwater system. If you see anything that may compromise our stormwater such as sewage spills, illegal connections to stormwater drains, or dumping of waste into drains, **PLEASE report these sightings** or any other concerns to our **Stormwater Hotline** at:

(530) 544-1910

Spread the Word!

Become a part of the **City of South Lake Tahoe Citizens Academy**. The Academy provides an opportunity for members of the community to learn more about getting involved and helping to build a sustainable community. You will learn about the workings of local government as well as the services and programs of the City of South Lake Tahoe. Use your knowledge to get involved and help spread the word about keeping our stormwater clean.

Additional Resources

- South Tahoe Refuse and Recycling Services
Hazardous Waste Removal:
www.southtahoerefuse.com/Hazardous_Waste.html
Yard Waste Removal:
www.southtahoerefuse.com/Residential.html
- Lake Tahoe Best Management Practices
www.tahoebmp.org
- City of South Lake Tahoe Citizens Academy
www.cityofslt.us/academy
- Tahoe Regional Planning Agency (TRPA)
www.trpa.org
- Tahoe Resource Conservation District
www.tahoercd.org/best-management-practices-bmps/
- South Tahoe Public Utility District
http://www.stpud.us/water_conservation.html



“Nothing but rain water or snow melt may be discharged into a storm drain. It is harmful and illegal to discharge waste, wash water, cleaning fluids or other materials of any kind into the storm drain system.”

(City of South Lake Tahoe - Urban Runoff and Storm Water Quality Management Ordinance, §35-7)

City of South Lake Tahoe Stormwater Program

1052 Tata Ln.
South Lake Tahoe, CA 96150

Phone: (530) 542-6038

Fax: (530) 542-2981

Website: <http://cityofslt.us/stormwater>



City of South Lake Tahoe

.....

STORMWATER MANAGEMENT PROGRAM



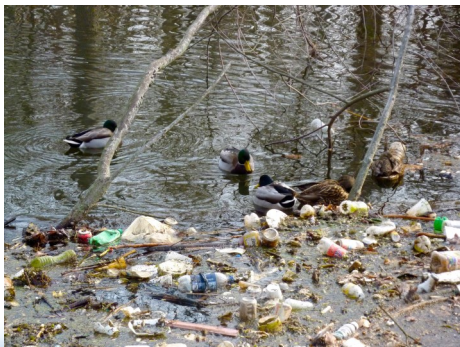
Public Information Brochure

What is stormwater runoff?

In a natural environment, most of the precipitation from rainfall and snowmelt soaks back into the ground and the remainder flows over the surface. In a developed environment, impervious surfaces such as rooftops, driveways, sidewalks, and parking lots prevent the water from returning to the ground and excess surface flow is created. This flow is called stormwater runoff. This larger and faster flow leads directly into our streams, rivers, and lakes and takes with it sediment, trash, bacteria, viruses, animal waste, hazardous waste, oil, grease, and anything else in its path.

Why is it a problem?

Stormwater is untreated and flows directly into our local rivers, creeks and lakes. Contaminants and pollutants in the water can be harmful to human health and aquatic ecosystems.



Aquatic life and plants can be poisoned by hazardous waste in the water. Humans and wildlife can get sick from eating diseased fish or shellfish or from ingesting polluted water. Debris such as plastic bags, six-pack rings, bottles, and cigarette butts can choke, suffocate or entangle aquatic life such as fish, birds, and aquatic mammals.

Lake Tahoe is a popular recreation area for swimming, fishing, boating and many other activities. However, all of these activities are threatened by polluted water. Even the lake's clarity and natural beauty is at stake. Lake Tahoe's deep water transparency, as measured by the Secchi disk, has been declining since measurement began in the late 1960's. Sediment, debris, chemicals and other pollutants picked up by stormwater have all contributed to the decline in transparency.

What can YOU do to help?

There are simple steps you can take as a residential homeowner or as a business owner that can help keep pollutants out of our stormwater. A small contribution from you can make a big difference in the cleanliness of our streams, rivers, and lakes.

The cleanliness of our waterways is everyone's responsibility. Never dump anything down storm drains. Take pride in your community and do your part to protect the health of our streams, rivers, and lakes.

6 Easy Ways You Can Keep Our Stormwater Clean

1 Auto Care
Repair leaks from your vehicle. Dispose of auto fluids and batteries properly. Take your car to a car wash that treats waste or try washing your car on your yard so that rinse water stays on-site and returns into the ground.

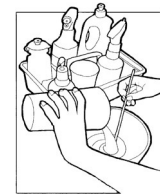


2 Lawn Care
Use pesticides, fertilizers and chemicals sparingly. Compost or mulch yard waste. Within city limits South Tahoe Refuse will pick up your unwanted yard waste for free. Never dump yard waste into storm drains. And do not over water your lawn.

3 Pet Waste
Pick up after your pet! Many popular trails and walkways in South Lake Tahoe provide plastic bags for waste pickup but always bring your own just in case and always dispose of waste properly.



4 Landscaping
Install Best Management Practices (BMPs) to help infiltrate rain and keep your sediment on-site. Examples include infiltration trenches, dry wells, and stabilized slopes. Protect piles of dirt and yard waste with compost, tarps or secured plastic sheeting.



5 Snow Removal and Storage
In areas that receive snow removal, paved driveways and parking pads can prevent soil disturbance and transport of sediment. Store snow piles on flat well-vegetated areas and don't dump snow down storm drains.

6 Household Hazardous Waste
Use safer alternatives to hazardous materials such as compost instead of chemical fertilizer, water-based instead of oil-based paint, etc. Only buy hazardous products in the quantity that you need. Use up the product entirely or dispose of any unused portions properly.